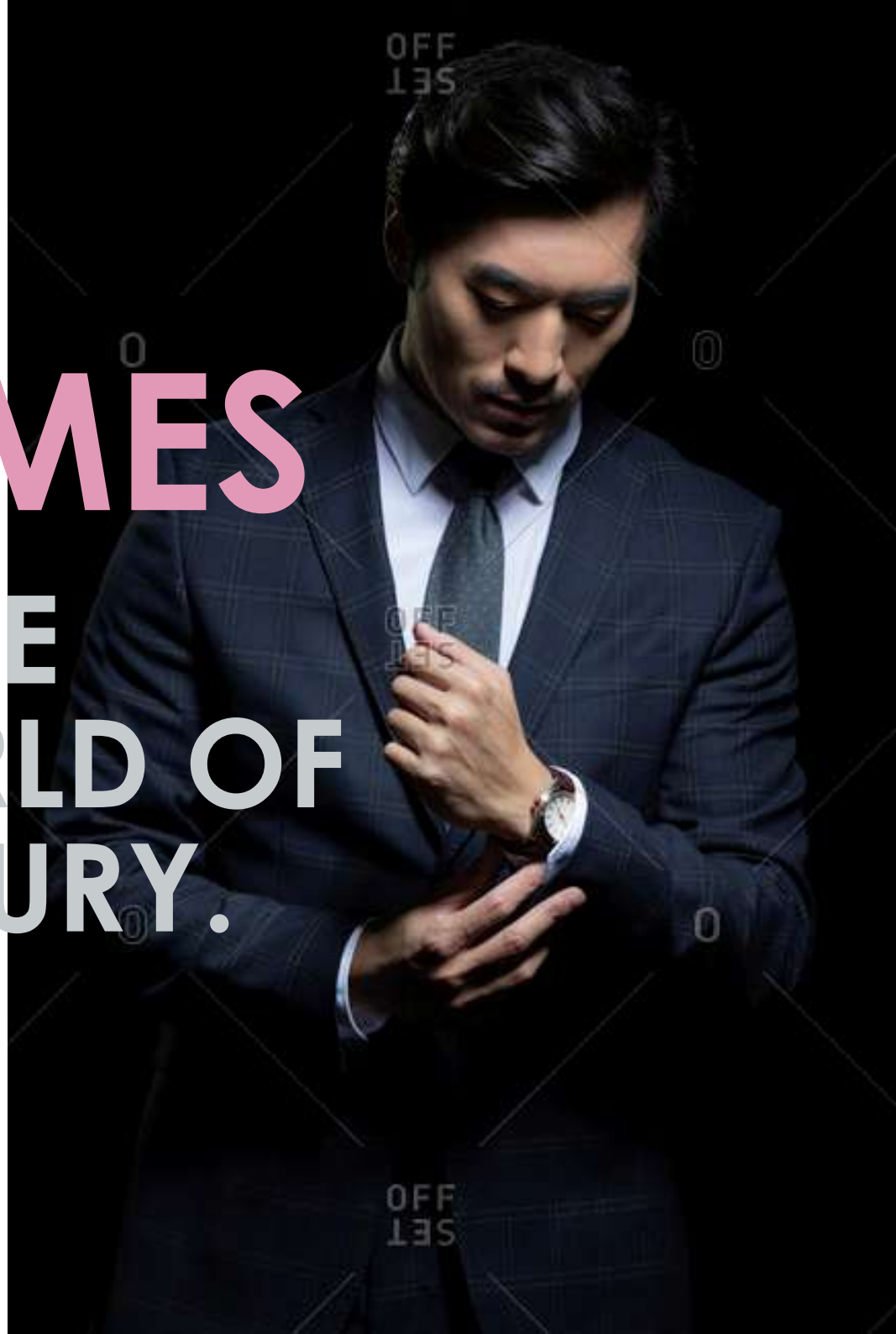


WINDCHIMES

ENTER THE CODE
TO A WORLD OF
EXCLUSIVE LUXURY.



THE CODE FOR THE CHOSEN FEW.

Success is a closed-door party. Only a select few are invited. The few who chase dreams relentlessly. The visionaries who think high and aim higher. The game-changers who won't settle for second place. The chosen few. Like you. Now all you need is a Code. Welcome to WINDCHIMES. Ultra-luxury residences? An alpha-numeric password? Neither and both.

WINDCHIMES is a world within a world. A microcosm, a culture of the chosen few. 9, to be precise. And no more. Achievers, leaders, influencers... exclusively those at the helm. The design, the location, the views and details... Read on to know how WINDCHIMES embodies and reflects the underlying principles, the philosophy of those who indeed, have arrived.





SEEK
THE FINEST.
AND GET IT.

A close-up photograph of a young man and woman in wedding attire. The man is on the left, wearing a dark suit and tie, smiling and looking towards the woman. The woman is on the right, wearing a white lace wedding dress, also smiling and looking towards the man. They are standing outdoors with green foliage in the background.

EXPERIENCE THE LUXURY OF LESS.

These are times of abundance. More of everything. More entertainment centres, bigger business hubs, more vehicles, larger crowds, rising decibel levels and more stress. Those who tower above the rest know the luxury of less.

Inspiration emerging in a moment of tranquility. The inner calm that silence brings. This is the rare luxury that WINDCHIMES holds. 9 ultra luxury residences finished with tasteful opulence.

The luxury of few neighbours and fewer vehicles. The luxury of less vehicular pollution.

The luxury of less commuting time to work or play thanks to superior connectivity. The luxury of exclusivity for the chosen few who know it's worth.

WINDCHIMES

SUPER-EXCLUSIVE ULTRA-LUXURY RESIDENCES BY RHINESTOA LLP

One stunningly designed, 4-storeied building with 9 plush residences, complete with premium external amenities. The grandeur of WINDCHIMES befits the stature of those who will occupy it. In a city sprinkled with pseudo-luxury residences, WINDCHIMES stands a tall reminder of the meaning of real luxury - rare and exclusive. 9 residences for 9 families. Each one speaks the language of opulence.



WINDCHIMES



LIVE THE GOOD LIFE.

Life on a higher plane demands more than the regular. Going beyond boundaries. Seeing things with a fresh pair of eyes, every moment, everyday. WINDCHIMES opens new avenues to experience rare luxury. It's where extra-ordinary is the new standard. Just 2 apartments per floor capture breath-taking views of the sun's complete trajectory - from sunrise to sunset. Impressive large windows ensure better ventilation and usher in soft, gentle breeze. Panormamic views of the Cooke Town, and other iconic cityscapes help widen your view. Ceiling soffits 10' high enhance the residences' volume and blur the distinction between the interior and exterior. Vast green spaces and enormous recreational facilities bring you a life beyond compare.

ENJOY YOUR PLACE IN THE SUN.

It is the chosen few, the truly evolved, who know the importance of having a well-rounded perspective. Of seeing the big picture. WINDCHIMES brings you expansive views of the trajectory of the sun. Every floor has only 2 spacious residences. Each residence is angled to capture enchanting views of both, the sunset and the sunrise, through large impressive windows for better ventilation, ushering in ample natural light and the fresh breeze.



WINDCHIMES

Amenities

Residences

All residences are sold as warm shell apartments giving flexibility for interior finishes. WINDCHIMES is provided with:

- Ultra spacious residences for 9 families
- Only 2-3 apartments per floor. 2 BHK and 3 BHK with large windows for maximum cross ventilation
- Living Room and Master Bedroom offering magnificent views. Of Hutchins road.
- Awe-inspiring decks extending your wide living room into the infinite space outdoors, with wooden soffits.
- Immaculate Clear Ceiling soffits 10' high that will enhance the flats' volume internally making it look more spacious
- Seamless railings on the decks projecting the natural surroundings while ensuring safety.
- Dining rooms and Bedrooms view towards the East
- Master Bedroom toilets with wide windows for picturesque panoramic views
- A complete sunk position in the kitchen allowing maximum flexibility for implementing the concept of an island kitchen.
- Orientation of residences to allow abundant natural light and ventilation in every room.
- Outdoor leisure spaces for different age groups, designed by kamat and rozario architects.
- A perfect blend of hardscapes and softscapes and selective ornamental water bodies to visually enhance the outdoor spaces.
- A convenient common service provider for internet and common infrastructure for DTH services like Tata Sky, Airtel etc
- Advanced early strimmer emission lighting arrestor
- Internal walls are plastered giving the flat a subtle finish.
- AC sleeves and exclusive space for outdoor units.

Entrance Lobby

- Majestic 10' height entrance Lobby
 - A Concierge service in the Main Lobby
 - Waiting lounge with Wi-Fi facility
 - Luggage room
 - Mail box room
 - Property manager's office
- Ground Floor Amenities

Security

CCTV surveillance at strategic locations such as society's entry, main lobby, service core, landscape zone and entry.

Facade and Facade Lighting

- Stunning facade glazing/full height glass for the window openings
- Attractive seamless sentry glass railing for decks
- Effortless control of deck lighting as part of the facade lighting

Structural Methodology

- Cutting edge 'Aluminum Formwork
- Additional Services

- Provision for rain water harvesting (RWH)



OPEN UP TO THE UNEXPECTED.

Matchbox homes, crowded complexes... Say goodbye to the old way of life. WINDCHIMES gives space a whole new dimension. With a substantially lower the WINDCHIMES building has a footprint which is as less as 15% leaving 15% of the area for recreational spaces for just 9 families. More green spaces per family and less waiting for shared facilities, more parking spaces & less vehicular population, more grandeur and fewer to share it.





**SET
YOUR
SIGHTS
HIGH.**



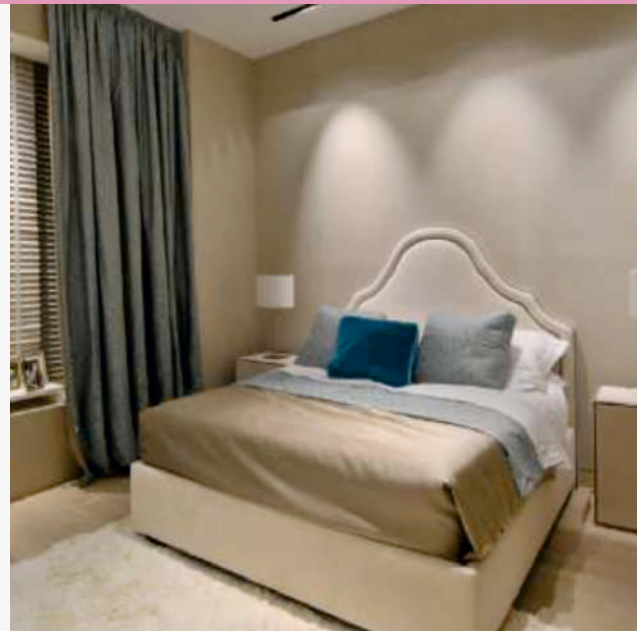
THE GRANDEUR OF A ELEGANTLY DESIGNED PLUSH LOBBY TO INSPIRE YOU.

A jaw-dropping expanse of open white space. Often that's all it takes to open the mind, to think limitless, The Elegantly designed plush Lobby opens into an elevator bank, French windows, designer flooring, ergonomic seating, help desks... this is less of a Lobby, more of a grand welcome exclusively for the select few who have earned the privilege. Concierge services, Waiting Lounge with Wi-Fi, Luggage Room, Mailbox Room and other facilities complete the picture.



A LIVING ROOM AND BEDROOMS THAT REFLECT LIFE ON A HIGHER PLANE.

Rare luxury is an aesthetically designed large Living Room Clear Ceiling Soffits 10 high enhance the flat volume internally Enjoy the luxury of vast that make it easier to customise and design the space according to your requirements. Take in more of the sky everyday through large windows that open up the world for you. The holistic view that's not for everyone. Cosy beds, smartly designed spaces, the Bedrooms in Windchimes are a class apart. Three bedrooms with attached toilets. The master bedroom and junior bedroom have a degree view



LUXURIOUS LIVING SPACES FOR A LIFE OUT OF THE ORDINARY.

Lend the finishing touches to the orange meringue. Give the apple pie a kiss of sugar. The uber life begins in the kitchen. New age design, makes your WINDCHIMES Kitchen truly world class. A complete sunk allows maximum flexibility for an island kitchen, another rare advantage. Soak your stress in a Jacuzzi. Get a spectacular view of the iconic cooke town. Designed to be your island of peace, this is your zone. Marked with class and elegance, make this your place for some 'me-time'. Large living Room extends into the exterior space in the form of wide decks. Smart design uses wooden soffits to give a visual experience of a seamless wide space extending outwards into the atmosphere for the decks enable a view of the natural environment, while ensuring your safety. Fine Dining is at its best here. Grand decor, an ambience that's just right, a treat for the senses. Enjoy one of life's greatest pleasures made even better at WINDCHIMES.





**HAVE A
VISION
THAT'S
LARGER
THEN LIFE**

An aerial night view of Cooke Town, showing a dense cluster of colorful buildings with warm interior lights glowing. The sky is a deep twilight blue.

Locality trends in Cooke Town

**CATCH PANORAMIC TWO
VIEW OF COOKE TOWN.**

Look beyond the horizons. Absorb new energies from the skyline.

Grab your snapshot of the universe Breathtaking panoramic views from WINDCHIMES don't sound nearly half as invigorating, enthralling, and inspiring as they truly are.

Sights that behold the eye. Not for everyone, the miracle of all that is great and boundless.





**MINGLE WITH
THE STARS.**

BE ONE WITH THE UNIVERSE IN THE SPECTACULAR TERRACE.

The Terrace takes you to new heights of luxury and exclusivity. After all, it's called the Terrace with good reason. Enjoy the Mood Lighting or sit back and take the informal sitting area. No crowds, no waiting...just 9 families like yours to share all this & more.



A man in a white shirt and dark tie is lying down, covered by a light-colored blanket, and reading a newspaper. He is smiling and looking towards the right. A bright yellow rectangular box is overlaid on the image, containing the text 'CONFER WITH YOURSELF.' in a bold, grey, sans-serif font. The background is a solid dark blue-grey color.

**CONFER
WITH
YOURSELF.**





GROUND FLOOR 3 BHK - REAR APARTMENT - G1

2572 Sft



GROUND / FIRST DUPLEX 2-3 BHK - APARTMENT - G2
2030 Sft



GROUND FLOOR 2 BHK - APARTMENT - G3

1499 Sft



FIRST FLOOR 2-3 BHK - APARTMENT - F1
2272 Sft



FIRST FLOOR 2 BHK - APARTMENT - F2
1669 Sft

WINDCHIMES ROLL OF HONOUR

Design Architect

Our work is an expression of our beliefs. Uncharted paths excite us. We react instinctively to a design problem. There is no formula and we don't have a style. We debate and argue galore. But at the end of a sore argument usually emerges a great idea. Nothing surpasses that moment in a process when a beautiful idea is born. Not even chocolate cake. We love chocolate cake. Process in design is of paramount importance – even if it means we ended up exactly where we started. We believe in strong ideas. Ideas that are native to their context. They automatically become unique! We believe that originality is a byproduct of integrity. We love this planet. We believe that being green means being receptive to the climate and to available materials. We believe that light is also a material. We don't hire people we can't be friends with. We remain true to our clients and to the contractors we work with. We like to keep it simple. Simple. Kamat & Rozario Architecture was set up in 2007. We are a multi-disciplinary, award-winning team of Architects in Bangalore offering services in architecture, interior design and furniture design.



Lester Rozario
Principal Architect

Lester graduated from MS Ramaiah Institute of Technology with a State Level Gold Medal in Architecture from VTU, Belgaum. His architectural thesis was placed amongst the All India Top 10 at the

National Institute for Advanced Studies in Architecture (NIASA). A period of constant exploration followed as he worked with architects in Bangalore such as Ulhas Rane at first, and then Nisha Mathew and Soumitro Ghosh. He has been honored with the MS Ramaiah Founder's Award and the Pidilite Industries Award for Excellence in Architectural Studies. In 2007 he teamed up with Smruti Kamat to create Kamat & Rozario Architecture in Bangalore. Get in touch with him at lester@kamatrozario.com.



Smruti Kamat
Principal Architect

Smruti Kamat graduated from the Kamla Raheja Institute for Architecture, Mumbai. She began her professional career with Kamu Iyer of Architects' Combine, Mumbai, where she gained exposure to projects of varied scales. This was followed by a Masters in Architecture at Virginia Tech, USA. Prior to establishing Kamat & Rozario Architecture with Lester, Smruti worked in New York city at Calvert Wright Architecture PC and then in Bangalore with Mathew & Ghosh Architects.



RHINESTOA LLP

Landmarks Planned With Passion

Site Address: Hutchins Road Cooketown
Contact Details: 8095466012, 9620309212
Email: rhinestoallp@gmail.com